



OAKFIELD

Park Road, Bexhill On Sea TN39 3FH

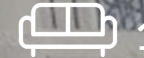
Asking Price £210,000



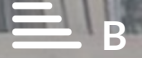
2



1



1



B

## Park Road, Bexhill On Sea TN39 3FH

This well-presented two bedroom flat is located on the popular Park Road in Bexhill, with lovely views over Egerton Park.

The property features a bright and spacious open-plan living area, including a comfortable lounge and dining space with large windows that let in plenty of natural light.

The kitchen is a good size and includes an integrated oven and hob. There are two bedrooms, a modern bathroom, and a characterful split-level layout that adds charm to the home.

Additional benefits include gas central heating, double glazing, and a well-maintained building.

Situated within walking distance of the town centre, seafront, train station, and local amenities, this property is ideal for first-time buyers, downsizers, or investors looking for a move-in-ready home in a fantastic location. This apartment is chain free.





### Lounge/Kitchen

22'9 x 16'1 (6.93m x 4.90m)

### Bedroom 1

14'5 x 10'9 (4.39m x 3.28m)

### Bedroom 2

14'3 x 9'4 (4.34m x 2.84m)

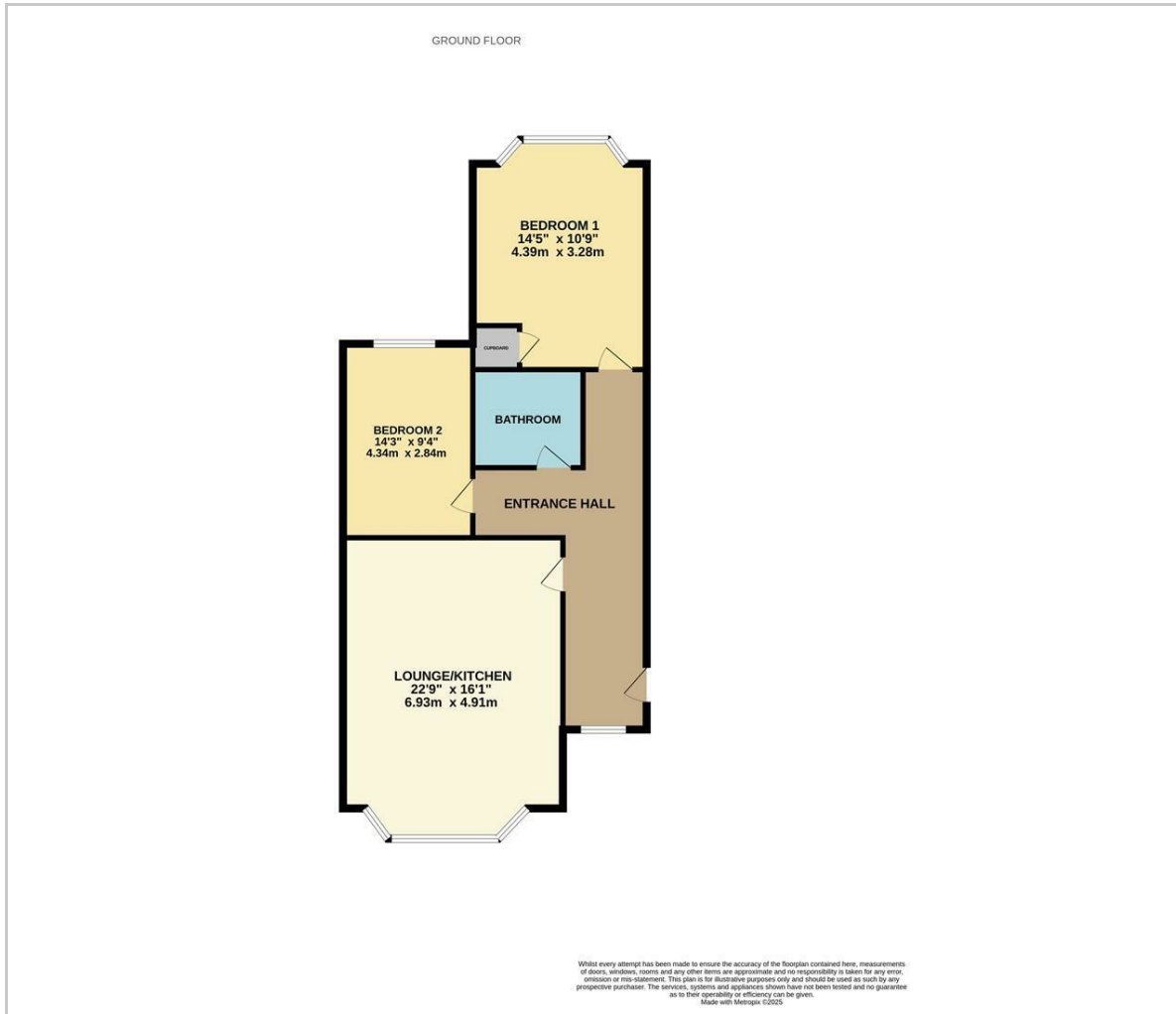
### Council Tax Band - A

### Lease Information

The seller advises that the property is offered as leasehold and has approximately 118 years remaining on the lease. The service charge is £1,250 per annum with a ground rent of £250 per annum.



## Floor Plan



## Viewing

Please contact us on 01424 224700  
if you wish to arrange a viewing appointment for this property or require further information.

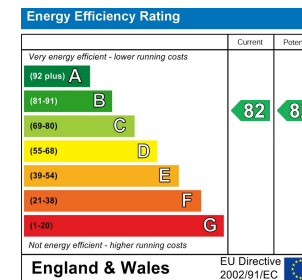
These particulars, whilst believed to be accurate are set out as a general outline only for guidance and do not constitute any part of an offer or contract. Intending purchasers should not rely on them as statements of representation of fact, but must satisfy themselves by inspection or otherwise as to their accuracy. No person in this firm's employment has the authority to make or give any representation or warranty in respect of the property.

12 Sackville Road, Bexhill on sea, East Sussex, TN39 3JL  
Bexhill@oakfieldproperty.co.uk

## Area Map



## Energy Efficiency Graph



01424 224700  
[www.oakfieldproperty.co.uk](http://www.oakfieldproperty.co.uk)